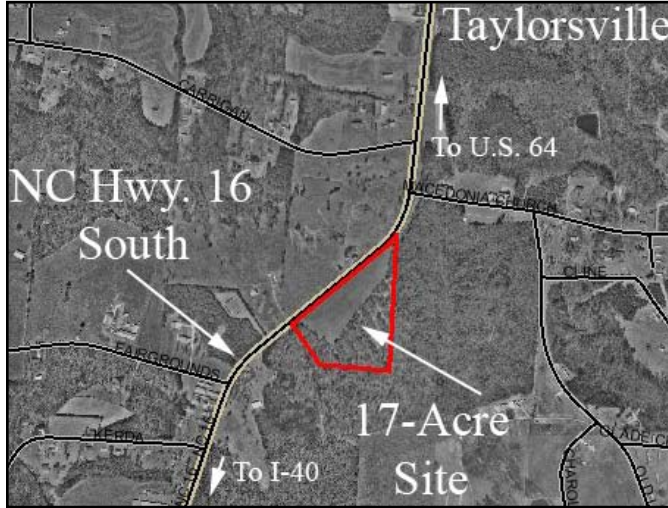


Alexander County, NC Available Site



GIS Sequence # 60805

Contact

Alexander County
Economic Development
621 Liledoun Road
Taylorsville, NC 28681



Director: David A. Icenhour
828-632-1161
dicenhour@co.alexander.nc.us

16 Realty Property

Hwy. 16 South
Taylorsville, NC

Number of Acres17
 Inside city limitsNo
 ZoningHwy.-Commercial
 WaterAlexander County
 SewerTown of Taylorsville
 ElectricDuke Power
 Miles to US-641
 Miles to I-4015
 Miles to I-7718
 Miles to Charlotte60
 AirportsCharlotte Douglas
Hickory Regional
Statesville Regional

Price

Price / Acre \$35,300
 *Level site, good road frontage.

